

- Double-ended shear beam load cell
- 5000 divisions NTEP class III and 10000 divisions NTEP class III L
- Versions:
 - **770n:** Nickelplated alloy steel construction. Protection IP 67 (EN 60529).
 - **770i:** Stainless steel construction.
- Hermetically sealed, fully welded, IP 68 (EN 60529) and IP 69K (ISO 20653)
- Easy installation
- Application: Tanks and silos weighing systems, weighbridges, on-board weighing

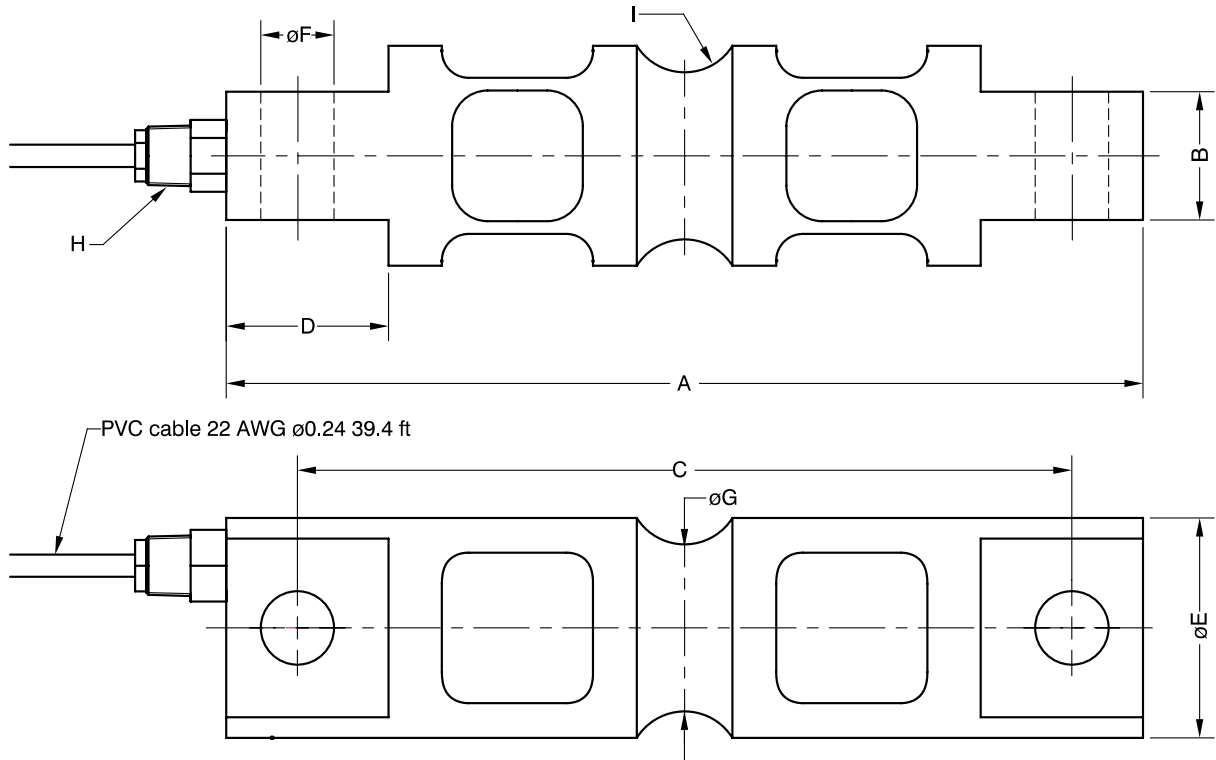
- 双端剪切梁式称重传感器
- 5000分度NTEP III级和10000分度NTEP III L级
- 版本:
 - **770n:** 镀镍合金钢
防护等级 IP 67 (EN 60529)
 - **770i:** 不锈钢
全焊接密封
防护等级 IP 68 (EN 60529) 和 IP 69K (ISO 20653)
- 安装简易
- 应用: 料仓和料罐称量系统, 汽车衡, 车载称重

Model 型号	Nominal capacity 量程 Ln	Minimum division vmin 最小分度值vmin NTEP III 5000	Minimum division vmin 最小分度值vmin NTEP III L 10000	Service load 安全过载 150% Ln	Safe load 安全载荷极限 200% Ln
770 US 5k lb	5k lb	0.4 lb	0.15 lb	7.5k lb	10k lb
770 US 10k lb	10k lb	0.8 lb	0.3 lb	15k lb	20k lb
770 US 20k lb	20k lb	1.6 lb	0.6 lb	30k lb	40k lb
770 US 30k lb	30k lb	2.4 lb	0.9 lb	45k lb	60k lb
770 US 40k lb	40k lb	3.2 lb	1.2 lb	60k lb	80k lb
770 US 50k lb	50k lb	4 lb	1.5 lb	75k lb	100k lb
770 US 60k lb	60k lb	4.8 lb	1.8 lb	90k lb	120k lb
770 US 75k lb	75k lb	6 lb	2.25 lb	112.5k lb	150k lb
770 US 100k lb	100k lb	8 lb	3 lb	150k lb	200k lb
770 US 150k lb	150k lb	12 lb	4.5 lb	225k lb	300k lb
770 US 200k lb	200k lb	16 lb	6 lb	300k lb	400k lb
770 US 250k lb	250k lb	20 lb	7.5 lb	375k lb	500k lb

Note: 200k-250k lb version 770n only

注: 200k-250k lb量程仅有770n版本

MODEL 770 US

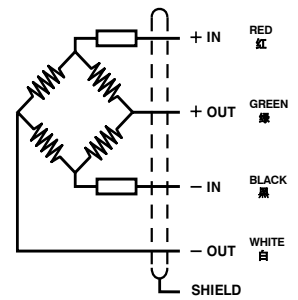


Nominal load 量程 (lb)	A	B	C	D	E \varnothing	F \varnothing	G \varnothing	H	I	Transport Weight 量程
5-10k	8.12	1.14	6.88	1.44	1.70	0.65	1.48	1/4-18NPT	0.5	6 lb
20k	8.12	1.14	6.88	1.44	1.95	0.65	1.48	1/4-18NPT	0.5	7 lb
30-40-50-60-75k	10.25	2.38	8.50	1.88	3.00	1.06	2.73	1/2-14NPT	1.0	18 lb
100k	11.25	2.50	9.50	1.88	3.50	1.06	3.24	1/2-14NPT	1.5	28 lb
150k	11.25	2.80	9.50	1.88	3.90	1.06	3.64	1/2-14NPT	1.5	34 lb
200-250k	16.10	4.60	13.00	3.05	5.38	1.56	5.17	1/2-14NPT	2.0	93 lb

Dimensions in inches. 单位: 英寸

SPECIFICATIONS			技术参数
Nominal capacities (Ln)	5k-10k-20k-30k-40k-50k-60k-75k-100k-150k-200k-250k	lb	量程 (Ln)
Accuracy class	5000 10000	n. NTEP III * n. NTEP III L*	精确度等级
Minimum dead load (Emin)	5	%Ln	最小静载荷
Service load	150	%Ln	安全过载
Safe load limit	200	%Ln	安全载荷极限
Total error	< ± 0.017	%Sn	综合误差
Repeatability error	< ± 0.015	%Sn	重复性误差
Temperature effect: on zero on sensitivity	< ± 0.011 < ± 0.0067	%Sn/10 °F %Sn/10 °F	温度影响: 零点 灵敏度
Creep error (30 minutes)	< ± 0.016	%Sn	蠕变 (30分钟)
Temperature compensation	+14...+104(10...+40)	°F (°C)	温度补偿
Temperature limits	+22...+158(30...+70)	°F (°C)	温度极限
Nominal sensitivity (Sn)	3 $\pm 0.1\%$	mV/V	灵敏度
Nominal input voltage	10	V	激励电压
Maximum input voltage	15	V	最大激励电压
Input impedance	700 ± 10	Ω	输入阻抗
Output impedance	700 ± 5	Ω	输出阻抗
No load output	< ± 2	%Sn	空荷输出
Insulation resistance	> 5000	M Ω	绝缘电阻
Maximum deflection (at Ln)	0.02 - 0.04	in	最大形变量 (量程内)

ELECTRICAL CONNECTION 电气连接



*Except 250k 770n version and 5k150k200k250k 770i version.

*不包含250k 770n版本和5k150k200k250k 770i版本