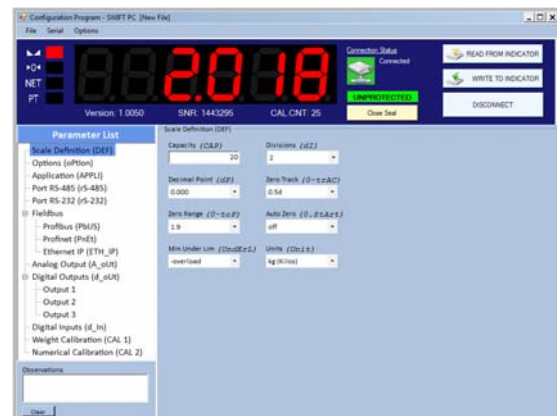


# SWIFT

## Indicator and High speed Transmitter



## “SWIFT-PC”

# Application Manual

SWIFT-PC version 1.0.0.7  
for SWIFT indicator with firmware 1.0.0.5

# INDEX

<b>1. SWIFT-PC Configuration Mode .....</b>	<b>1</b>
1.1. Description .....	1
1.2. Connecting SWIFT-PC “Configuration Mode” to SWIFT indicator .....	1
1.3. Local connection: Access using SWIFT keyboard.....	1
1.4. Remote connection: No keyboard access needed.....	2
1.5. Software operation .....	3
1.6. Software calibration seal.....	5
<b>2. Bootloader SWIFT-PC.....</b>	<b>6</b>
2.1. Description .....	6
2.2. Loading application .....	6
2.3. Connecting SWIFT-PC “Bootloader” to SWIFT indicator.....	6
2.4. Local connection: Access by using indicator keyboard.....	6
2.5. Remote connection: No needed to Access using indicator keyboard .....	7
2.6. Software operation .....	7
2.7. Software seal.....	8
2.8. Indicator status.....	8
<b>3. Installation SWIFT-PC.....</b>	<b>9</b>
3.1. Requirements and compatibility.....	9
3.2. Pre-Installation .....	9
3.3. Installing the program.....	9
3.4. Un-installing the program .....	9

## 1. SWIFT-PC Configuration Mode

### 1.1. Description

“Configuration Mode” application of SWIFT-PC program allows the user to:

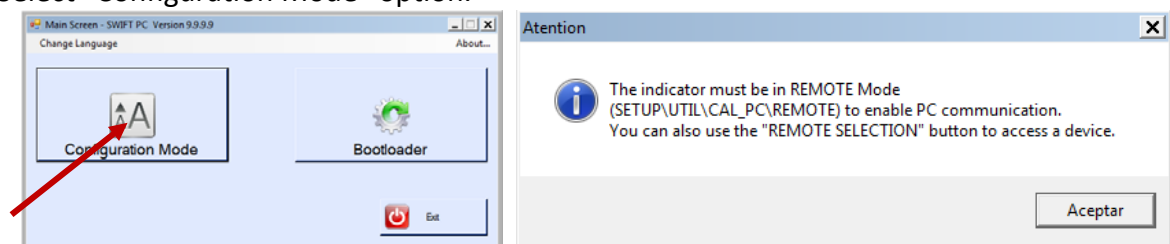
- Configure SWIFT parameter settings from a computer.
- Perform a Calibration using Weight Calibration or by Numerical Method.
- Upload or Download parameter settings.
- Print a configuration.

### 1.2. Connecting SWIFT-PC “Configuration Mode” to SWIFT indicator

Install “SWIFT-PC” software on the PC.

Open “SWIFT-PC” and select the required language (English or Spanish).

Select “Configuration Mode” option.



Connect SWIFT serial port RS-232 or RS-485 to a free PC serial port RS-232 or RS-485.

Wiring connection listed in table below:

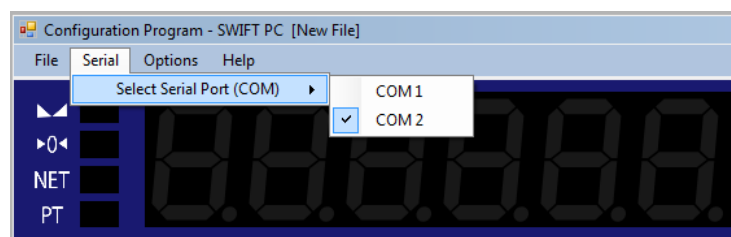
RS-232	
PC	SWIFT
Connector pin SUBD9 female	Terminal RS232 port
2	TxD
3	RxD
5	GND

RS-485	
PC	SWIFT
Connector pin SUBD9 female	Terminal RS485 port
1	DATA+
6	DATA-
5	GND

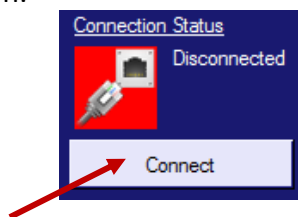
### 1.3. Local connection: Acces using SWIFT keyboard

Turn SWIFT indicator in “REMOTE” mode (SETUP\UTIL\CAL\_PC\REMOTE).

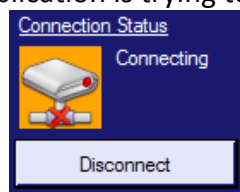
In “SWIFT-PC Configuration Mode” application, click on “Serial” menu and select the port (COMx) where the SWIFT is connected. A list will display all serial ports available on the PC.



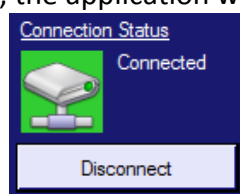
Click on the "Connect" button.



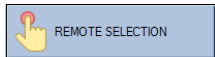
A message will show that the application is trying to connect to the SWIFT indicator.

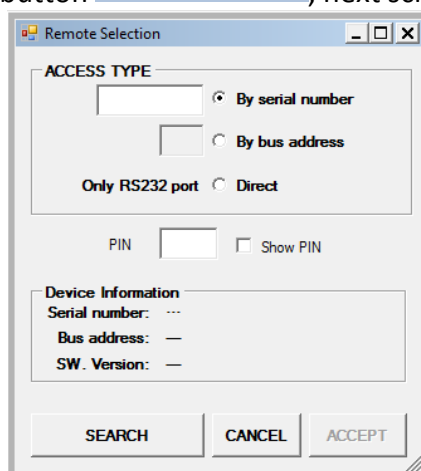


When the indicator is connected, the application will show the following message:



#### 1.4. **Remote connection: No keyboard access needed**

Press REMOTE SELECTION button , next screen will appear:

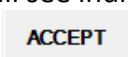


We can search the indicator by his serial number, by his bus address or by direct access (only when connected to SWIFT's RS-232 serial port).

It will be necessary to introduce PIN code in order to change protected parameters.

PIN code must be introduced before clicking  button.

If an indicator is found, we will see indicator serial number, bus address and software version.

To select the indicator press: 

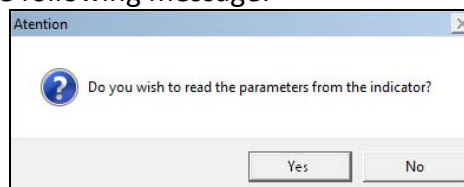
While performing the search, the device or devices connected will show an indication to inform that are working in a special mode for remote access. This indication will be different depending on the device:

Type of device	Indication
Device with display	Message <b>PC Ctrl</b> will appear
Device without display (SWIFT COM)	Fast blink of POWER/COMM. and ERROR leds (led FIELDBUS off if any)

In this mode, input/outputs, standard communication and indicator applications will not work. The only communication will be between SWIFT and SWIFT-PC software. To exit this mode, is needed to reboot the device, this will happen when closing SWIFT-PC software.

### 1.5. Software operation

While trying to connect to the indicator, the application checks the parameters configuration. If any parameter differs between the application and the indicator, the application will show the following message:

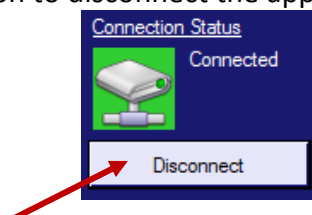


If the user selects "Yes" the application will read the parameters from the indicator and upload them to the application. If the user selects "No" then the parameters of the indicator will not be uploaded to the application and all parameters that differ will be marked in green.

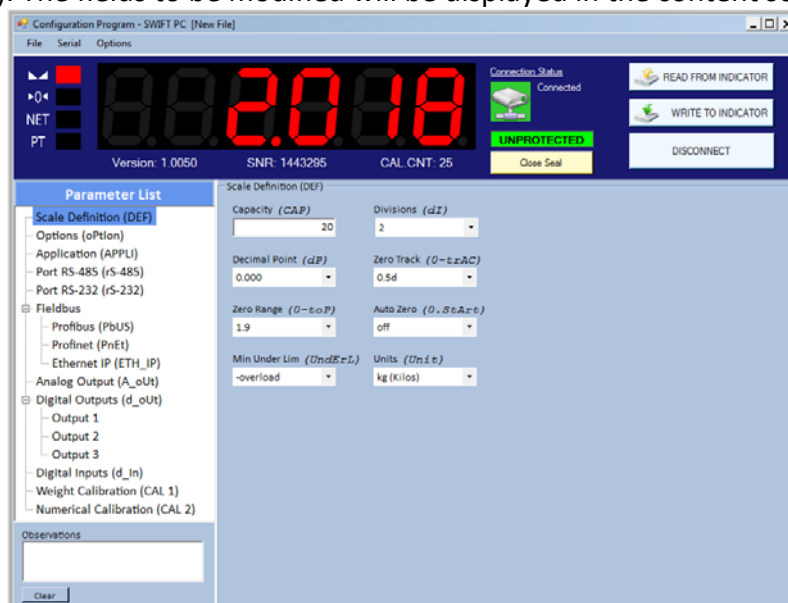
When the connection is complete, the application will show the current state of the indicator.



Click on the "Disconnect" button to disconnect the application from the SWIFT indicator.



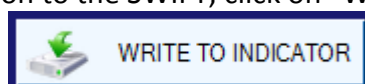
The user must select the parameters to be modified in the side bar named “Parameter List” (on the left). The fields to be modified will be displayed in the content section (on the right).



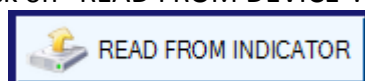
Parameter fields are formatted with colours listed below:

- **Green:** Shows that the parameters on the SWIFT-PC application fields are not the same as the parameters on the indicator, or have been modified.
- **Red:** Parameter value is not allowed; when writing a configuration to the indicator a message will appear indicating which parameter is incorrect.
- **Grey:** The software version of the indicator is not up-to-date and the application does not recognize this parameter. The parameter will not be uploaded to the indicator even if this value is modified.

To download (write) a configuration to the SWIFT, click on “WRITE TO INDICATOR”.

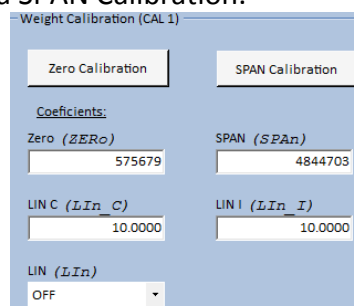


To read indicator parameters, click on “READ FROM DEVICE”.



To Perform a Calibration using Weight Calibration, click on **Weight Calibration (CAL 1)** in the Parameter List.

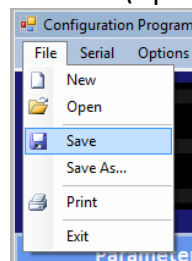
The content section will display the configuration parameters and the buttons needed to perform a Zero Calibration and a SPAN Calibration.



To perform a Numerical Calibration, click on **Numerical Calibration (CAL 2)** in the Parameter List. The content section will display the configuration parameters and the buttons needed to perform a Zero Calibration and a Numerical Calibration.

To save the current parameter configuration, click on "File\Save".

To open a saved parameter configuration select "File\Open" and select a configuration file.

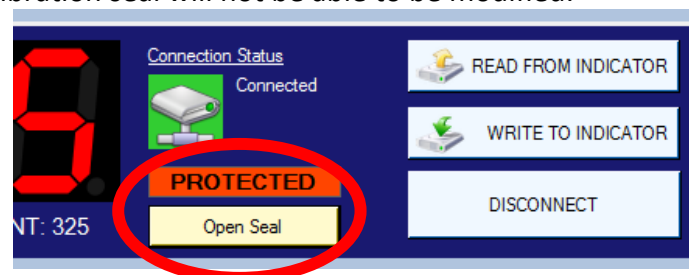


The "Observations" field allows to add information that can be saved in the configuration file on the PC, this information will not be written to the indicator.

Clicking on "Clear" button will erase the content on the field.

## 1.6. Software calibration seal

When connecting the indicator to the SWIFT-PC application using REMOTE SELECTION, if the correct PIN code was introduced, a button will appear that allows to change the state of the software calibration seal, also calibration switch (CAL.SWITCH) must be open, if calibration switch is close, the software calibration seal will not be able to be modified:



Depending on software calibration seal state, will show UNPROTECTED (if is open) or PROTECTED (if is close). By clicking the button is possible to open or close the software calibration seal.

**ATTENTION:** Opening or closing the software calibration seal will increment the calibration counter number.

## 2. Bootloader SWIFT-PC

### 2.1. Description

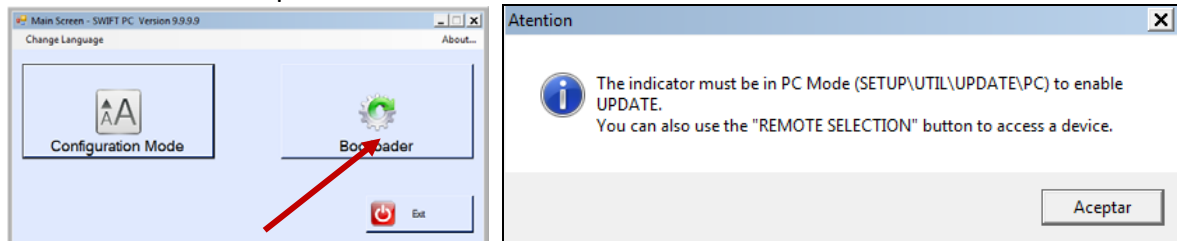
This software will update the firmware of the SWIFT indicator using a PC with an RS-232 or RS-485 serial port.

### 2.2. Loading application

Install "SWIFT-PC" software on the PC.

Open "SWIFT-PC" and select the required language (English or Spanish).

Select "Bootloader" option.



### 2.3. Connecting SWIFT-PC "Bootloader" to SWIFT indicator

Connect SWIFT serial port RS-232 or RS-485 to a free PC serial port RS-232 or RS-485.

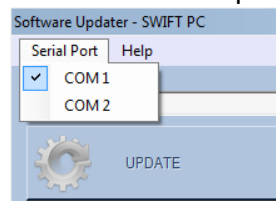
Wiring connection listed in table below:

RS-232	
PC	SWIFT
Connector pin SUBD9 female	Terminal RS-232 port
2	TxD
3	RxD
5	GND

RS-485	
PC	SWIFT
Connector pin SUBD9 female	Terminal RS-485 port
1	DATA+
6	DATA-
5	GND

### 2.4. Local connection: Access by using indicator keyboard

In "SWIFT-PC Bootloader" application, click on "Serial Port" menu and select the port (COMx) where the SWIFT is connected. A list will display all serial ports available on the PC.



To update the firmware, set indicator in UTIL\UPDATE mode. The correct PIN must be entered each time the indicator asks for it. For further details refer to SWIFT manual.

The following screen will be displayed:

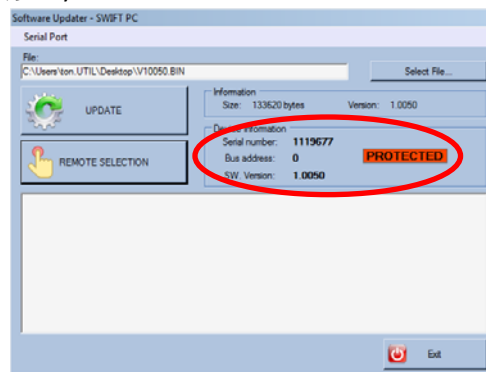
P	c				
---	---	--	--	--	--

Now the indicator will wait for a connection to the PC.



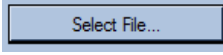
## 2.5. Remote connection: No needed to Access using indicator keyboard

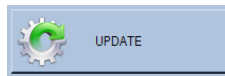
(See 错误!未找到引用源。)

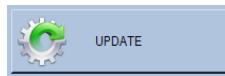


The picture above shows that the software calibration seal and/or the calibration switch are in protected position. In case of software calibration seal close, it will be possible to open the seal and press UPDATE. In case of calibration switch close, it won't be possible to update without manually unlocking the calibration switch.

## 2.6. Software operation

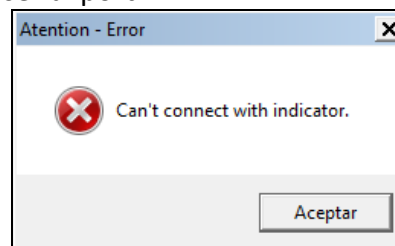
Select the binary file by clicking on the  button and locate the directory where this file is allocated. The binary file has the extension “.bin”. The program checks the file and, if the check is successful, its version and size in bytes will be displayed.



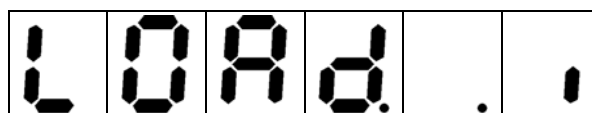
After selecting the file, the  button will be enabled. Clicking on it will start erasing the FLASH memory and downloading the new firmware. The updating process will be displayed in the program window. The required steps are: erasing flash memory, downloading and programming of the new firmware and resetting the indicator.

An error message “Can't connect with indicator” will appear in cases listed below:

- Indicator is not in “update” mode: set it to “update” mode
- A communication error appear: check connection and cable
- Incorrect selection of the serial port



If connection is successful, during software update, SWIFT will display the following screen with the last digit in motion:

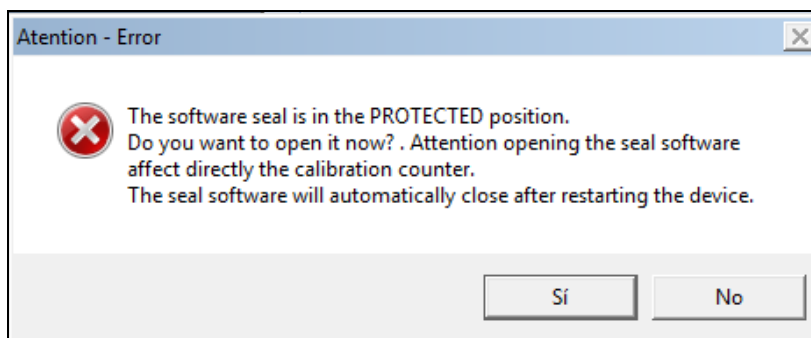


**IMPORTANT NOTE:**

If the update process is not successfully completed **do not switch off** the indicator (If the indicator has been switched off before the update process finishes, in some cases it will be necessary to send it to the technical service). Start the update process again by clicking on the **UPDATE** button.

## 2.7. Software seal

If software calibration seal is close, a warning message will appear when trying to update the software and will be necessary to introduce PIN code in order to open the software calibration seal. In this case, the software calibration seal will be automatically closed after the software update. Warning message:



## 2.8. Indicator status

SWIFT device with display:

**Load 1:** This message appears during the software update or while waiting for the PC software connection via RS-485 port.

**Load 2:** This message appears during the software update or while waiting for the PC software connection via RS-232 port.

SWIFT device without display (SWIFT COM):

Alternate flashing POWER / COMM. and ERROR LEDs (FIELD BUS LED off if any): Indicates that the computer is in Bootloader mode for updating the software via SWIFT-PC / Bootloader program.

Depending on the flashing sequence, it shows which serial channel is used to communicate:

- If the ERROR LED remains in "on" state longer it indicates communication via RS-485.
- If the ERROR LED remains in "on" state longer it indicates communication via RS-232.

### 3. Installation SWIFT-PC

#### 3.1. *Requirements and compatibility*

This program was tested with Microsoft Windows XP, Windows Vista, Windows 7 and Windows 8.

The communications between the PC and the SWIFT requires a serial port.

#### 3.2. **Pre-Installation**

The "SWIFT-PC" software is distributed as a compressed file (\*.zip), so the user must extract the file before it can be installed. To extract the file, several programs such as [Winzip](#), [Winrar](#) (shareware, not free) can be used, or even others such as [7-Zip](#) (GNU) or [ZipGenius](#) (Freeware).

#### 3.3. **Installing the program**

Once the files are extracted, run the 'Setup.exe' by double-clicking on it to install the application. The installation program will guide you through the installation process and will create the program group from which you can run the application.

#### 3.4. **Un-installing the program**

To uninstall the software, go to the 'Control Panel' and double-click on "Add or Remove Programs". Select the program "SWIFT-PC" and follow the instructions on-screen. The uninstall program will guide you along the process.