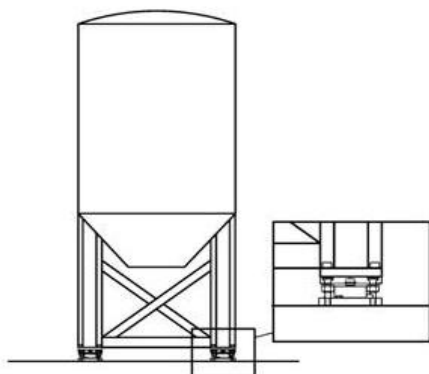
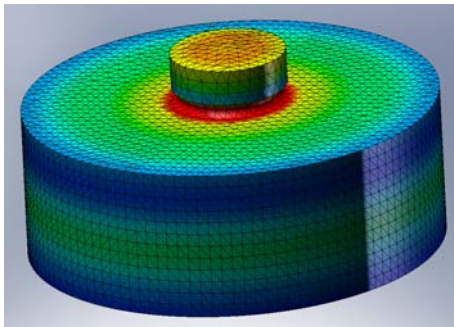




MODEL 420 2,5t-5t-10t 20t-30t Tank and Silo Weighing Solution



- UTILCELL model 420 load cell and mechanical assembly is specially adapted for your needs in tank and silo weighing solution.
- Weighing technologies have many advantages as very high resolution, non-invasive method and specially suitable for bulk and solid materials.
- The stainless steel load cell construction and the hermetically sealed encapsulation give an IP68 protection with high reliability and long working life into industrial environments.
- The internal technology is fully optimized, using modern stress analysis software, obtaining a very low profile and a robust compression design.
- The easy installation, with complete lift-off accessories (zinc plated or stainless steel) gives a very competitive solution for process weighing and level control.