



**MOUNTING KIT FOR LIFT-OFF PREVENTION
ON SILO FOR LOAD CELL MOD. 750
Acc. 75906**

BASIC MOUNTING INSTRUCTIONS

(Rev. 1 – 01/15)



1. PLACE THE ACCESSORY IN ITS INSTALLATION POSITION AND FIX IT TO THE FOUNDATION AND TO THE LEG OF THE SILO/TANK.



Figure 1

2. REMOVE THE LOAD CELL FIXING SCREWS FROM THE BOTTOM PLATE.



Figure 2

3. PLACE SPACER WASHERS SUPPLIED WITH THE LOAD CELL.

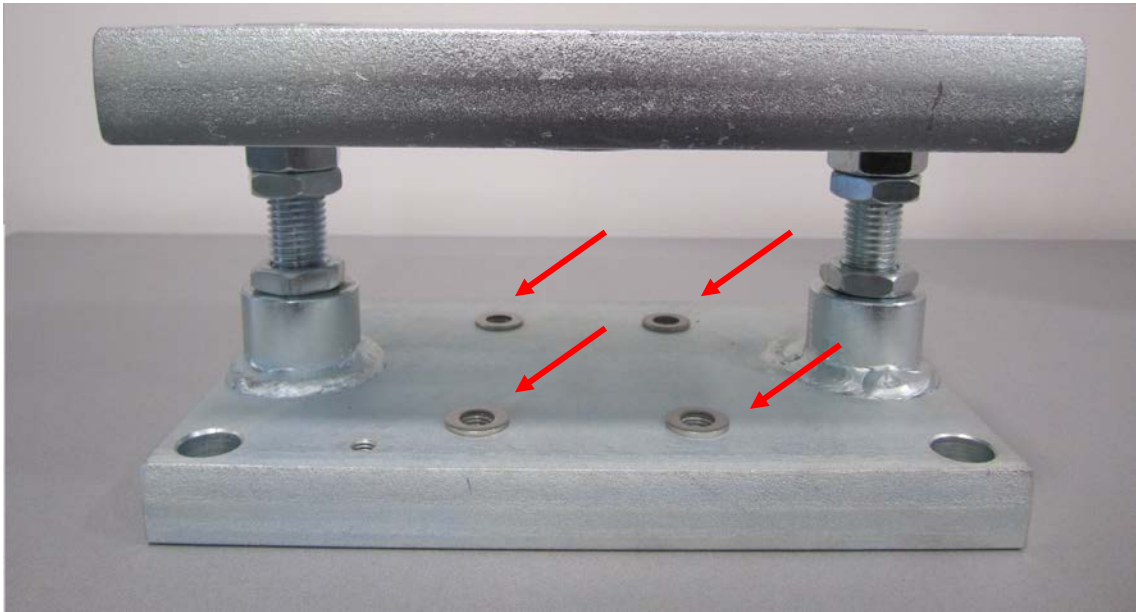


Figure 3

4. SCREW THE LOAD CELL TO THE BOTTOM PLATE.

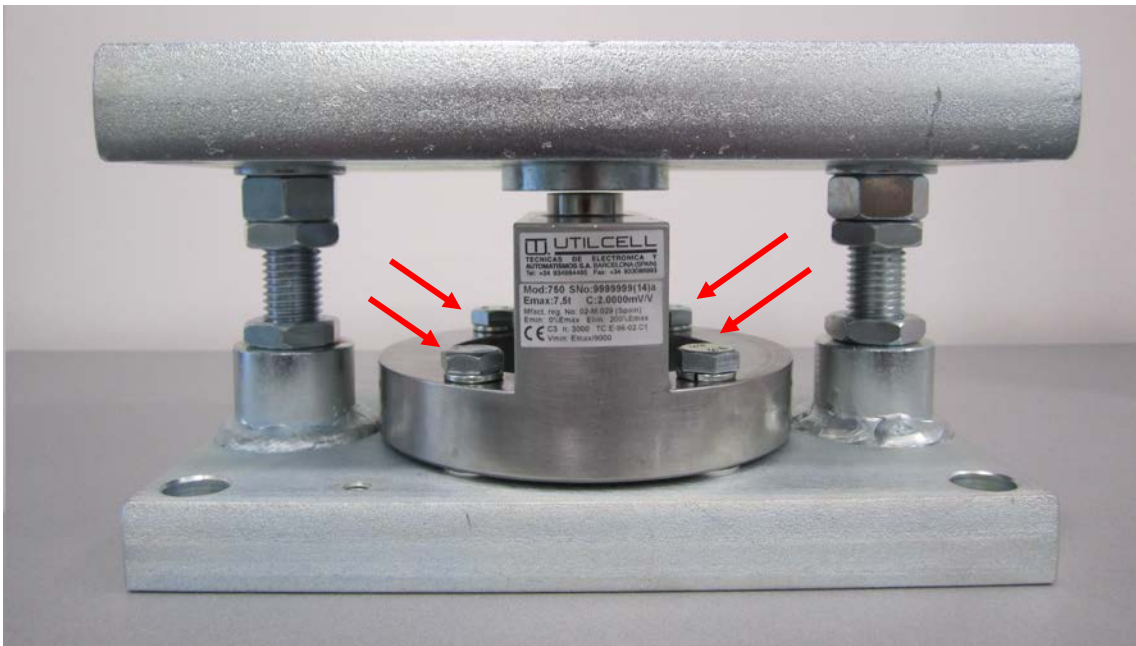


Figure 4

5. UNSCREW THE FOUR NUTS UNTIL THE TOP PLATE CONTACTS THE LOAD CELL.



Figure 5

6. VERIFY THE CLEARANCE BETWEEN TOP PLATE AND THE LIFT-OFF SCREW.

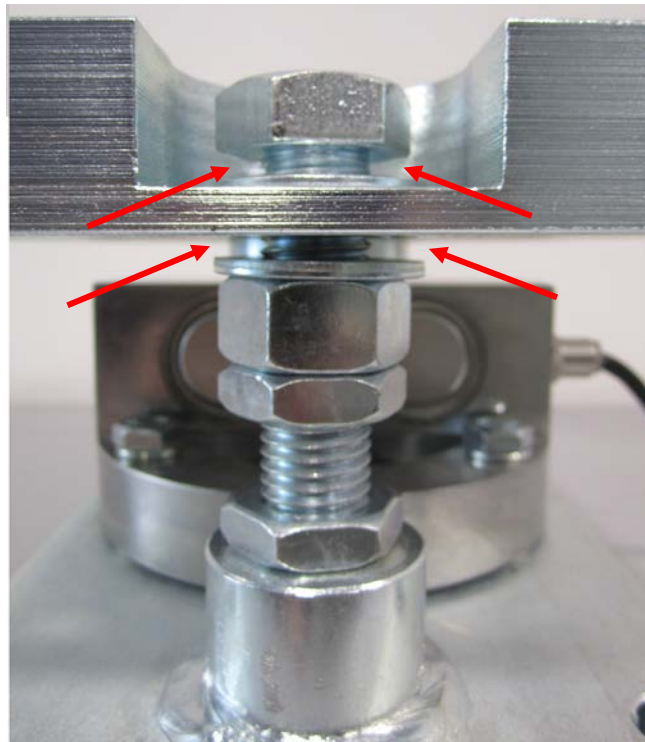


Figure 6

7. ENSURE THE PARALLELISM BETWEEN THE TOP AND BOTTOM PLATES, D1 SHOULD BE EQUAL TO D2 AND D3 IN ALL THE CORNERS.

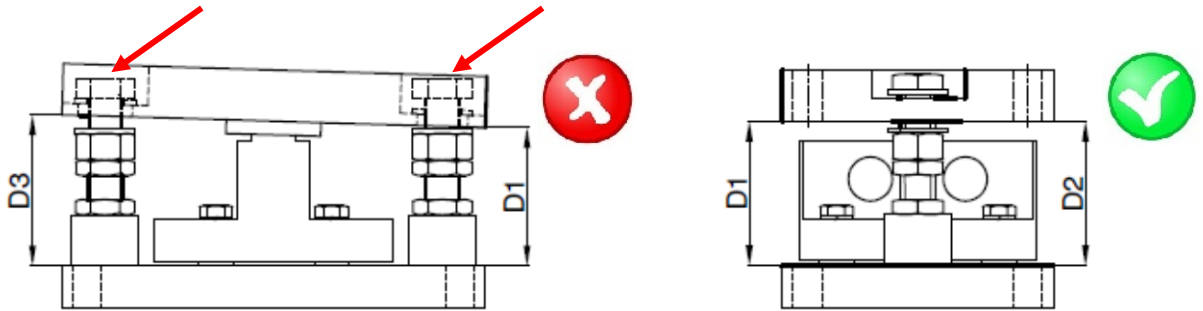


Figure 7

8. IF THERE IS A DEVIATION BETWEEN D1, D2 AND D3, THEN WE SHOULD PLACE METAL SHIMS OF DIFFERENT WIDTH (1, 2 or 3mm) BETWEEN THE LEG OF THE TANK AND THE TOP PLATE TO GET THE NECESSARY PARALLELISM FOR A CORRECT INSTALLATION (Figure 8).

*perform the same procedure for D1 and D3, if necessary

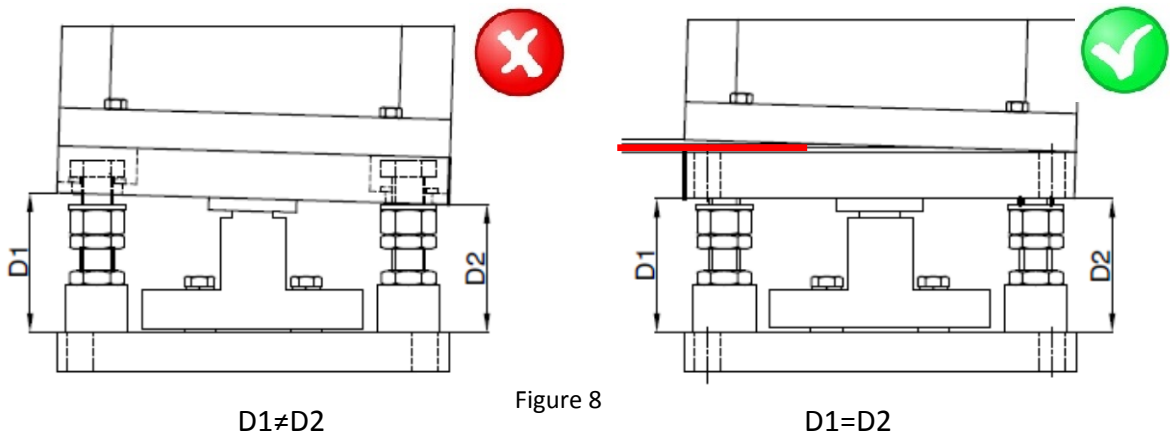


Figure 8

9. ENSURE THAT THERE IS NO DEVIATION BY TORQUE BETWEEN TOP AND BOTTOM PLATES.

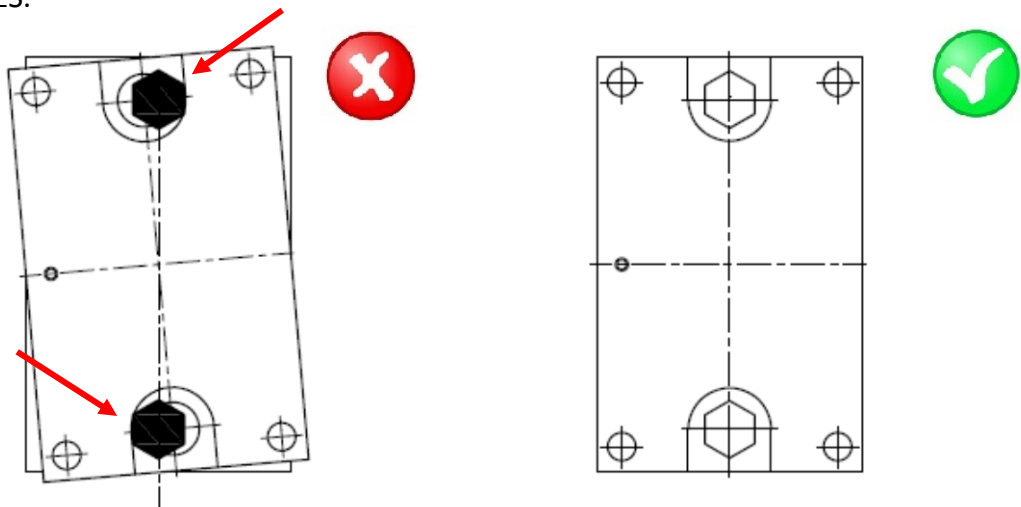


Figure 9