
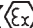
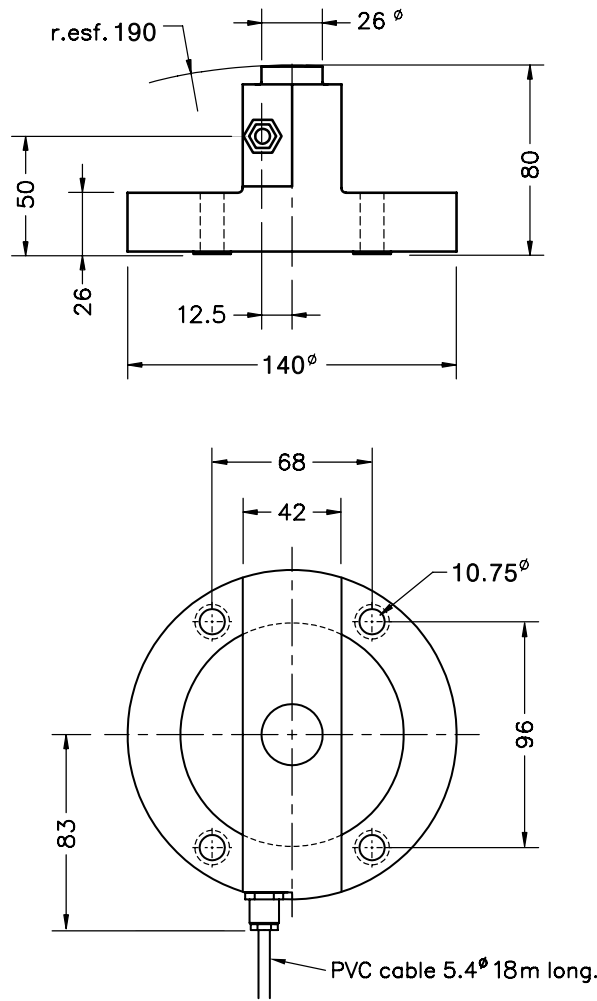


- Double shear load cell
- Versions:
  - **750a**: Alloy Steel, protected against corrosion by epoxy painting
  - **750i**: Fully Stainless Steel
- 3000 divisions OIML R60 class C
- Hermetic, fully welded, protected IP 68 (EN 60529)
- Pre-corner adjustment optimized for multicell systems
- 6 wire (senses) electrical connection
- Available in **ATEX**  version (optional) Zone 0-1-2 (gas) and 20-21-22 (dust)
- Application: Tanks and silos weighing systems with highly linear and low profile requirements

- 双剪切梁式称重传感器
- 材质:
  - **750a**: 合金钢制, 聚氨脂涂层
  - **750i**: 不锈钢
- 3000分度 OIML R60 C级
- 完全焊接密封, 保护等级IP67 (EN 60529)
- 对于使用多只传感器的系统易于调校
- 六线制电缆连接
- 防爆可选 **ATEX** 
- 应用: 对非线性要求较高、对体积要求较小的称重系统, 如: 皮带秤、料斗秤和汽车衡

Model 型号	Nominal capacity 量程 Ln	Accuracy class 准确度等级 n. OIML	Minimum division 最小分度值 vmin	Service load 最大称量 150 % Ln	Safe load limit 安全载荷极限 200 % Ln
750 7.5 t	7.5 t	3000	0.9 kg	11.25 t	15 t
750 10 t	10 t	3000	1.2 kg	15 t	20 t
750 15 t	15 t	3000	1.7 kg	22.5 t	30 t
750 20 t	20 t	3000	2.3 kg	30 t	40 t
750 25 t	25 t	3000	2.8 kg	37 t	50 t
750 30 t	30 t	3000	3.4 kg	45 t	60 t

# MODEL 750

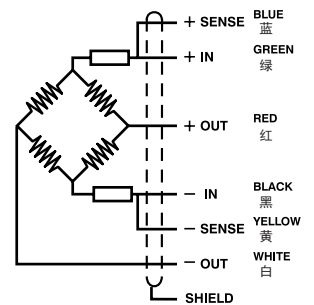


Dimensiones en mm. 单位: mm.

Transport weight - 重量: 4.5 kg

SPECIFICATIONS			技术参数
Nominal capacities (Ln)	7.5-10-15-20-25-30	t	量程 (Ln)
Accuracy class	3000	n. OIML	准确度等级
Minimum dead load	0	%Ln	最小静载荷
Service load	150	%Ln	最大称量
Safe load limit	200	%Ln	安全载荷极限
Total error	< ±0.017	%Sn	综合误差
Repeatability error	< ±0.015	%Sn	重复性误差
Temperature effect: on zero	< ±0.01	%Sn/5 °C	温度影响: 零点
on sensitivity	< ±0.006	%Sn/5 °C	灵敏度
Creep error (30 minutes)	< ±0.016	%Sn	蠕变 (30分钟)
Temperature compensation	-10...+40	°C	温度补偿
Temperature limits	-30...+70	°C	温度极限
Nominal sensitivity (Sn)	2	mV/V (1)	灵敏度
Nominal input voltage	10	V	激励电压
Maximum input voltage	15	V	最大激励电压
Input impedance	800 ±25	Ω	输入阻抗
Output impedance	700 ±5	Ω	输出阻抗
No load output	< ±2	%Sn	空荷输出
Insulation resistance	> 5000	MΩ	绝缘电阻
Maximum deflection (at Ln)	0.3	mm	最大变形位移 (量程内)

## ELECTRICAL CONNECTION 电气连接:



«SENSES»: 2 additional wires to maintain a constant voltage supply at the load cell when used with proper instrumentation. Use specially when long wires and wide temperature range.

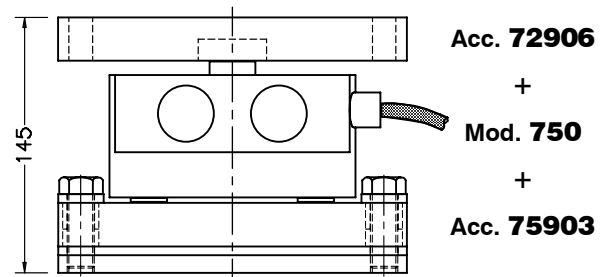
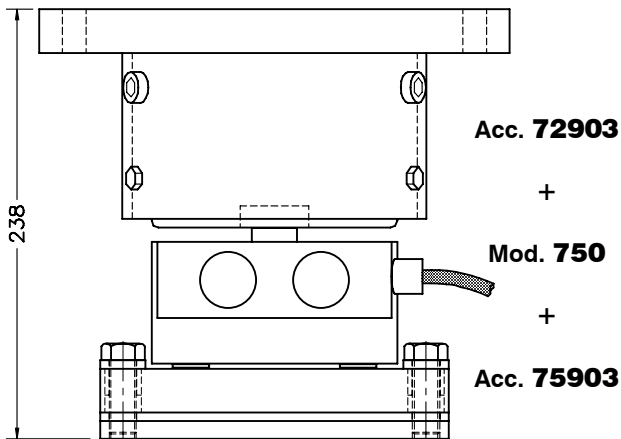
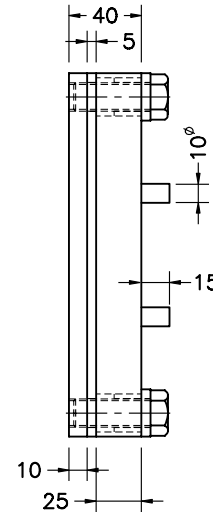
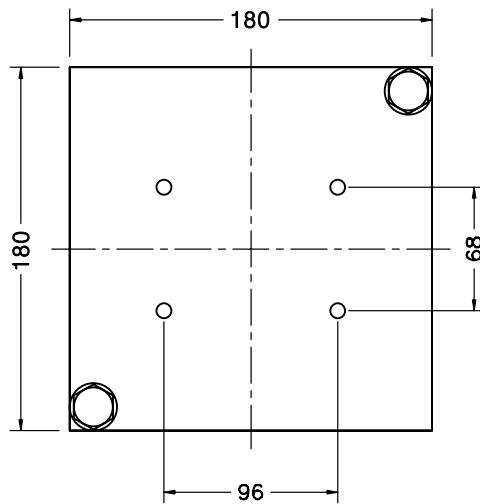
SHIELD: Not connected to transducer body.

(感应): 传感器与仪表一起使用时, 增加两条感应线, 以保证传感器供桥电压的稳定; 电缆较长及温度范围较大时, 更应使用。

屏蔽: 不与传感器外壳连接。

(1) Pre-corner adjustment optimized at ±0.05% by output current calibration / 通过角差调整, 可优化±0.05%的电流输出

**BASE PLATE FOR MODEL 750**  
**MOD.750安装附件底板**



Accessory lower plate is permanently fixed to the structure or ground by welding or cement. Unscrew the upper plate it's enough, to replace a load cell.

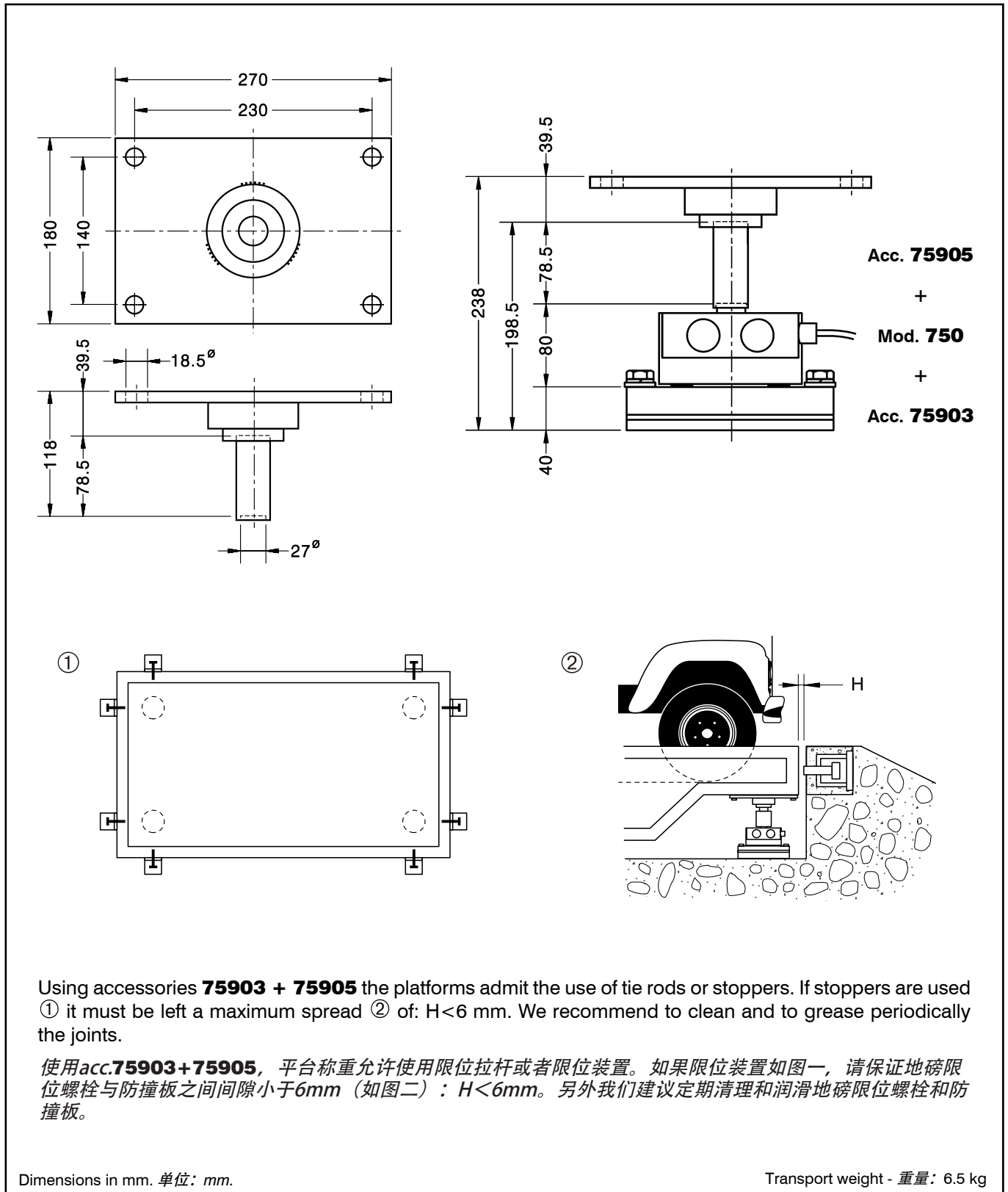
安装附件的焊接板用焊接或水泥浇筑的方式永久地固定在结构或地基上。然后将下板用螺丝固定在焊接板上，松开下板螺丝即可更换称重传感器。

Dimensions in mm. 单位: mm.

Transport weight - 重量: 9.25 kg

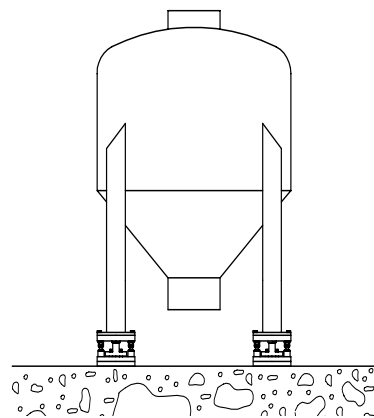
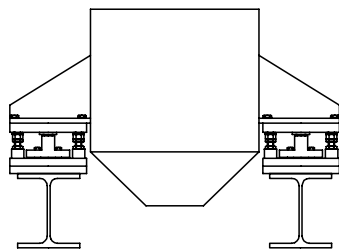
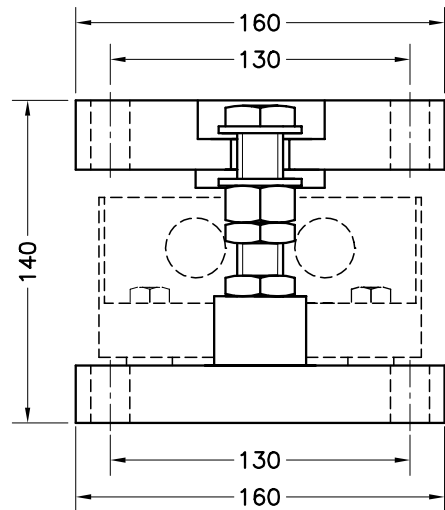
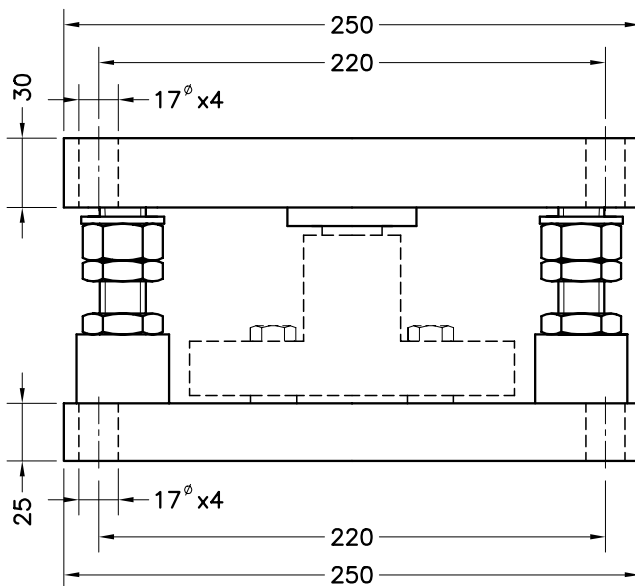
## SELF-ALIGNING PIVOTING SUPPORT FOR MODEL 750

### MOD.750自复位安装附件



**MOUNTING KIT LIFT-OFF PREVENTION FOR SILO FOR MOD. 750**  
适用于料斗的带限位的安装附件MOD.750

- **Material:**  
Alloy Steel zinc-plated **Acc. 75906**  
Stainless Steel **Acc. 75906i**
- **材质:**  
合金钢镀锌 **Acc. 75906**  
不锈钢 **Acc. 75906i**



Dimensions in mm. 单位: mm.

Transport weight - 重量: 20 kg