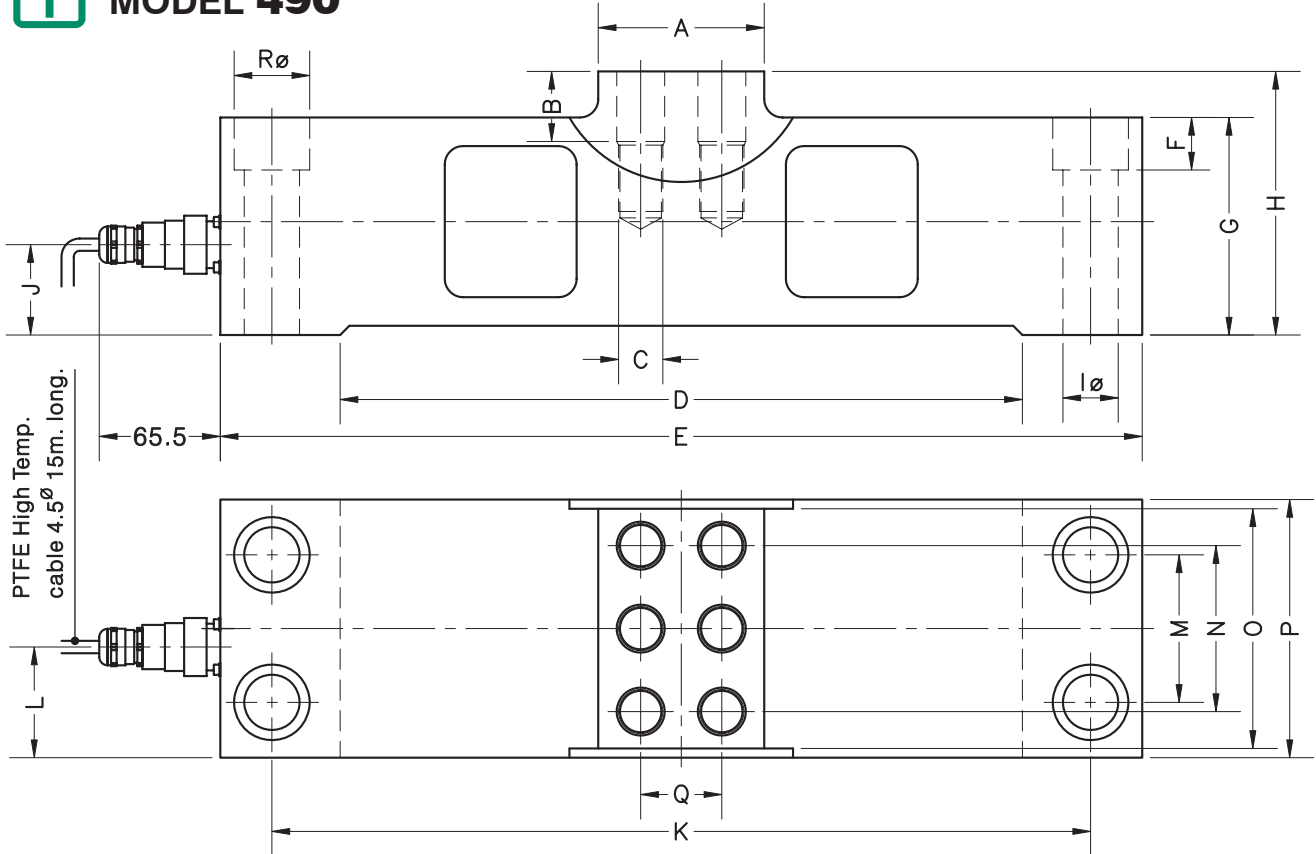


- Double shear load cell
- Accuracy class $\pm 0.05\%$
- Service temperature up to 150°C
- Measuring element from alloy steel with nickel plated treatment
- Input cable connection through hermetic connector
- Protected IP 67 (EN 60529)
- Applications: Ladle turret and ladle ferries scales, scrap bucket, roller table, tundish cars, hopper and silos in high temperature environments for the Metal Industry

- 双剪切梁式称重传感器
- 准确度等级为 $\pm 0.05\%$
- 工作温度 150°C
- 镀镍合金钢测量元件
- 输入电缆有快速接头
- 保护等级 IP 67 (EN 60529)
- 应用：在冶金行业的高温环境下，大包回转台和钢包车，废钢料篮车，辊道，中间包车，料斗和料仓

| Model 型号 | Nominal capacity 量程 Ln | Accuracy class 准确度等级 | Minimum division 最小分度值 vmin | Service load 最大称量 150 % Ln | Safe load limit 安全载荷极限 |
|-------------|------------------------------|-------------------------|-----------------------------------|----------------------------------|---------------------------|
| 490 40 t | 40 t | $\pm 0.05\%$ | 8 kg | 60 t | 100 t |
| 490 50 t | 50 t | $\pm 0.05\%$ | 10 kg | 75 t | 120 t |
| 490 100 t | 100 t | $\pm 0.05\%$ | 20 kg | 150 t | 210 t |
| 490 150 t | 150 t | $\pm 0.05\%$ | 30 kg | 225 t | 290 t |
| 490 200 t | 200 t | $\pm 0.05\%$ | 40 kg | 300 t | 360 t |

MODEL 490

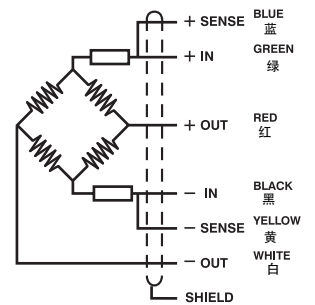


| Nom. Load 量程 | A | B | C | D | E | F | G | H | I \varnothing | J | K | L | M | N | O | P | Q | R \varnothing | Transp. Weight 重量 |
|-----------------|-----|-----|--------|-----|-----|------|-----|-----|-----------------|------|-----|------|-----|-----|-----|-----|----|-----------------|----------------------|
| 40 t | N/A | N/A | M20x30 | 340 | 450 | N/A | 105 | N/A | 26 | 45 | 398 | 47 | 68 | 75 | N/A | 110 | 40 | N/A | 32 kg |
| 50 t | 80 | 32 | M20x30 | 340 | 450 | 25.5 | 105 | 130 | 26 | 45 | 398 | 52 | 68 | 75 | 110 | 120 | 40 | 38 | 36 kg |
| 100 t | 90 | 38 | M24x36 | 370 | 500 | 28.5 | 118 | 143 | 30 | 49 | 444 | 58 | 80 | 90 | 130 | 140 | 44 | 41 | 54 kg |
| 150 t | 90 | 38 | M24x36 | 410 | 560 | 32 | 133 | 158 | 33 | 66 | 500 | 67.5 | 94 | 102 | 150 | 160 | 44 | 46 | 81 kg |
| 200 t | 90 | 40 | M24x40 | 450 | 620 | 32 | 150 | 175 | 33 | 70.5 | 560 | 64 | 114 | 110 | 170 | 180 | 44 | 46 | 116 kg |

Dimensions in mm. 单位: mm

| SPECIFICATIONS | | | 技术条件 |
|----------------------------------|----------------------|------------|--------------|
| Nominal capacities (Ln) | 40-50-100 150-200 | t | 量程 (Ln) |
| Accuracy class (at const. temp.) | ± 0.05 | % | 准确度等级 |
| Minimum dead load (Emin) | 0 | %Ln | 最小静载荷 |
| Service load | 150 | %Ln | 最大称量 |
| Safe load limit | ≥ 180 | %Ln | 安全载荷极限 |
| Total error | $< \pm 0.05$ | %Sn | 综合误差 |
| Repeatability error | $< \pm 0.05$ | %Sn | 重复性误差 |
| Temperature effect: on zero | $< \pm 0.025$ | %Sn/5°C | 温度影响: 零点 |
| on sensitivity | $< \pm 0.015$ | %Sn/5°C | 灵敏度 |
| Creep error (30 minutes) | $< \pm 0.05$ | %Sn | 蠕变 (30分钟) |
| Temperature compensation | -10...+100 | °C | 温度补偿 |
| Temperature limits | -30...+150 | °C | 温度极限 |
| Nominal sensitivity (Sn) | $2 \pm 0.25\%$ | mV/V | 灵敏度 |
| Nominal input voltage | 10 | V | 激励电压 |
| Maximum input voltage | 15 | V | 最大激励电压 |
| Input impedance | 800 ± 30 | Ω | 输入阻抗 |
| Output impedance | 700 ± 5 | Ω | 输出阻抗 |
| No load output | $< \pm 2$ | %Sn | 空荷输出 |
| Insulation resistance | > 5000 | M Ω | 绝缘电阻 |
| Maximum deflection (at Ln) | 0.6-1 | mm | 最大变形位移 (量程内) |

ELECTRICAL CONNECTION 电气连接:



«SENSES»: 2 additional wires to maintain a constant voltage supply at the load cell when used with proper instrumentation. Use specially when long wires and wide temperature range.
SHIELD: Not connected to transducer body.

(感应): 传感器与仪表一起使用时, 增加两条感应线, 以保证传感器供桥电压的稳定; 电缆较长及温度范围较大时, 更应使用。

屏蔽: 不与传感器外壳连接。